

1 Downloading the Westell Firmware

To download the Westell Firmware from the BellSouth site, do the following:

1. Open a browser, and go to <http://www.fastaccess.drivers.bellsouth.net>.
2. Under Modems, Network Cards, and Routers, click **Westell**.

Modems, Network Cards, and Routers:	Client Software:	Guides and Tools:
2Wire	Dial-Up Networking	AOL Troubleshooting
3Com HomeConnect PCI	Macintosh OS X Native Client	EN Clean
Alcatel Speed Touch Home	NTS Internet	Home Networking
Alcatel Speed Touch USB	Windows XP Native Client	Self-Installation Guides
Cayman 3220H		XBox Connection
Dell ITEK PCI		
Efficient Networks 3060 PCI		
Efficient Networks 4060 USB		
Westell		

Figure 1: BellSouth Driver Site

3. Under Firmware, select the version of the firmware you want to load onto your Westell modem.

Westell Modem Downloads:			USB Driver Uninstall Directions	
<ul style="list-style-type: none"> ▪ Drivers USB Drivers ▪ Uninstall USB Drivers Uninstall ▪ Firmware Version 1.5.4 Version 1.5.20 ▪ Westell Guide 	96 K	08/19/02	<ol style="list-style-type: none"> 1. Download the USB Drivers Uninstall file. 2. Plug the USB cable into the computer. 3. Run the USB Drivers Uninstall executable. 	<ol style="list-style-type: none"> 1. Click the desired driver or firmware. 2. Select "Save to Disk." 3. Select the file in which you want to save the download. 4. Click "OK/Save." 5. Double-click the download's icon in the selected file. 6. Follow the installation prompts.
	132 K	09/23/02		
	928 K	10/04/02		
	929 K	03/07/03		
	3.98 MB	11/26/02		

Figure 2: Firmware Version

- Click **OK** to save the file to disk or to another location.

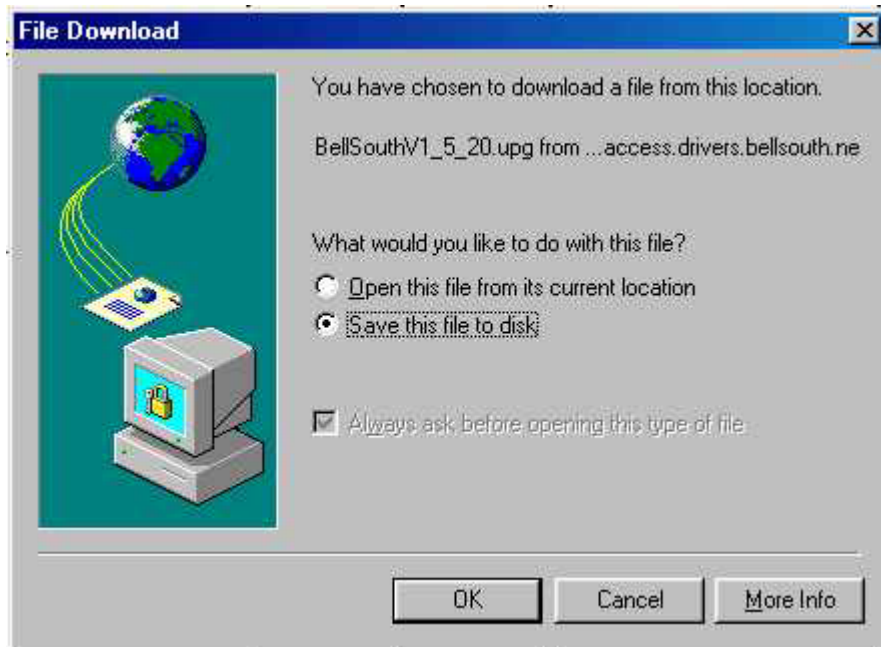


Figure 3: Save File

- Select **Desktop** from the **Save in** menu and click **Save**.

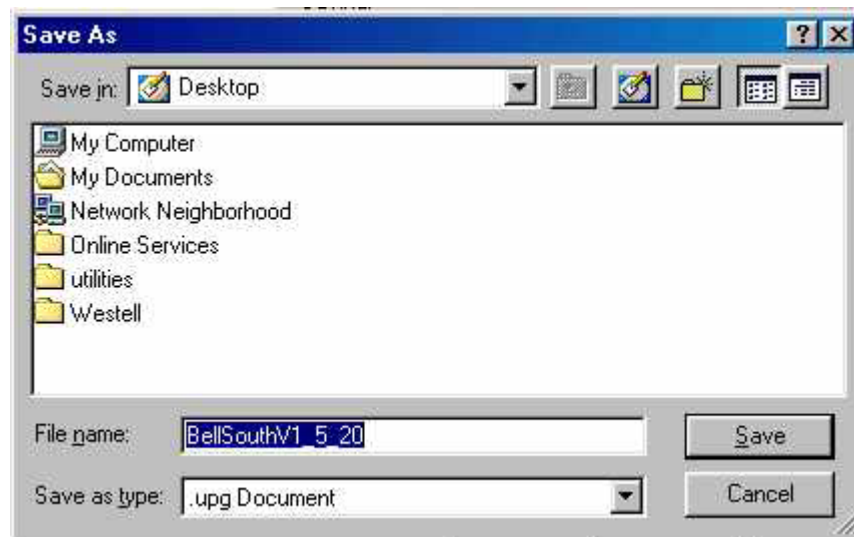


Figure 4: Save File Location

2 Upgrading the Westell Firmware

To upgrade the Westell firmware, do the following:

1. After downloading the file to your desktop, launch a browser and in the Address field, enter <http://launchmodem> or <http://192.168.1.254>.



Figure 5: Westell Interface URL

2. Click **Update Modem** on the left of the Westell interface screen.

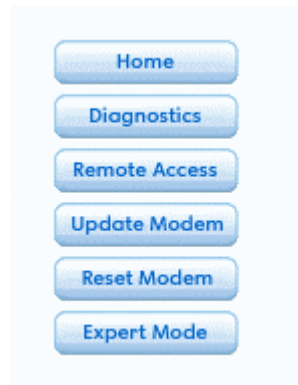


Figure 6: Westell Interface Buttons

3. In the Software Upgrade window, click **Browse**, and browse to the Westell firmware file on your desktop. Then click **update software from PC**.



Figure 7: Software Upgrade Window

- Please wait a moment while the Westell resets. When the reset is complete, you can reconnect. The connection light, USB or Ethernet, and ready light must be solid green in order to connect.



Figure 8: Warning Screen

- To reconnect, complete the **User ID**, **Password**, and **Confirm Password** fields, and click **connect**.


A login form titled "Easy Login" with a light blue header. It contains three input fields: "User ID" with the example "XXXX@bellsouth.net" and the text "Example: username@bellsouth.net" below it; "Password" with the text "Provided by your ISP." below it; and "Confirm Password". A blue "connect" button is centered at the bottom of the form.

Figure 9: Easy Login

Note: To verify the firmware version number, click **Home** and the information is located at the bottom of the screen.

Modem Info	
Modem Name	WireSpeed Dual Connect
Model	A90-210030-04
Serial	02B410691996
Software Version	01.05.20
MAC Address	00:60:0f:55:88:8b
Warranty Date	January 14, 2003

Figure 10: Modem Info